

A 3D puzzle with several pieces. The word "Methodology" is written across the puzzle pieces in a bold, blue, sans-serif font, slanted upwards from left to right. The puzzle pieces are light blue and white, set against a dark blue background with a glowing, ethereal light effect.

**Methodology**

ManageIT

Decision Interface



# ManageIT / Goals

- Preparedness
  - Proven processes, deliverables, & tools
- Quality
  - Consistent deliverables
- Speed
  - Rapid application development tools
- Credibility
  - Continuity between sales and delivery
- Shared Knowledge
  - Centralized & reusable



# ManageIT Deliverables

- **Common Terminology**
  - Speak the same language
- **Graphical Overview**
  - Graphically summarize methodology
- **Detailed Process Flows**
  - Documented & repeatable processes
- **Deliverable Templates**
  - Consistency & best practice
- **Common Repository**
  - Shared resources & knowledge base
- **Training Plan**
  - Short and long term rollout with planned optimization

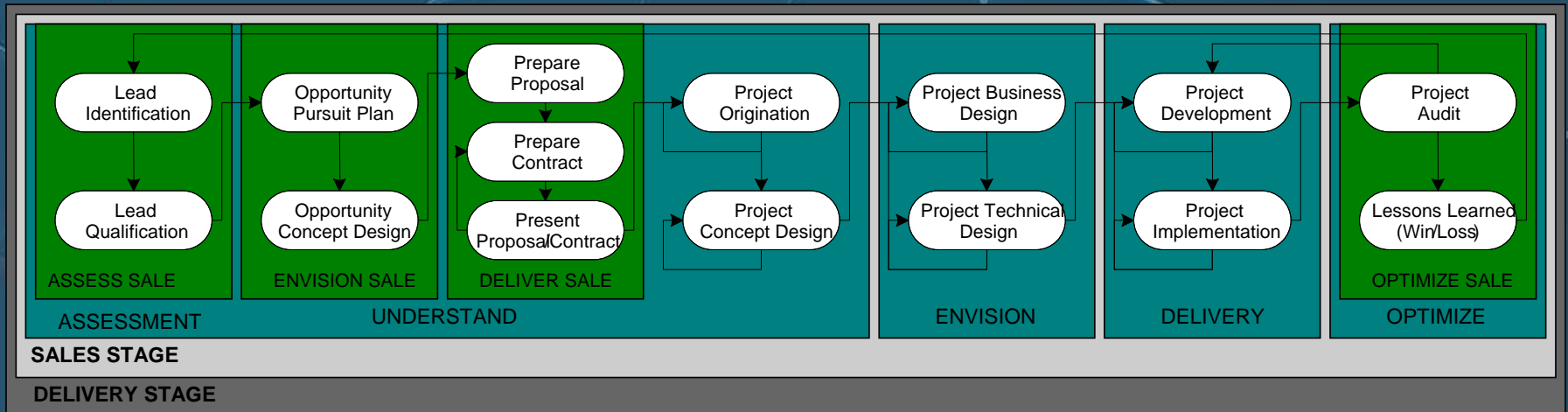


# ManageIT Terminology

- Processes – flows defining Sales & Delivery tasks
- Stages – highest-level component of the methodology
- Phases – defined to understand the flow of deliverables
- Deliverables / Tasks – document, tool, code, or activity
- Models – project specific flavor of the Delivery Process
- Roles – labeled activity type associated to an individual
- ASP – an Application Service offering maintained by Provider
- VIM – A Virtual Interprise Model is a defined vertical ASP
- Version Control – ability to track and label file versions



# ManageIT Overview

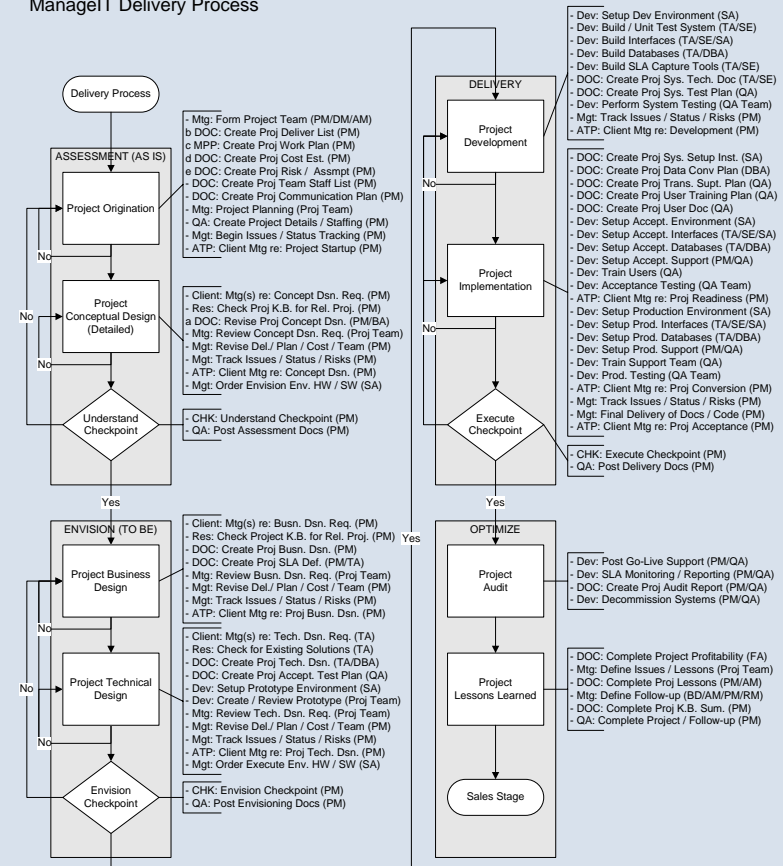


- Consistent Stages (independent unless overlapping)
- Customizable Phases
- Standardized Processes
- Allow Model Specific Deliverables / Tasks
- Integrates Sales & Delivery Processes

# ManageIT Process Flows

- Detail Process Overview
- Complete Process Flows for Project Sales thru Delivery
- Define Sales and Delivery Handshakes
- Identify Stage & Phase Deliverables
- Integrate Utilized Systems & Tools (e.g., CRM, QA)
- Lists the Resource Roles Responsible per Task
- Customizable Phases per Model

ManageIT Delivery Process



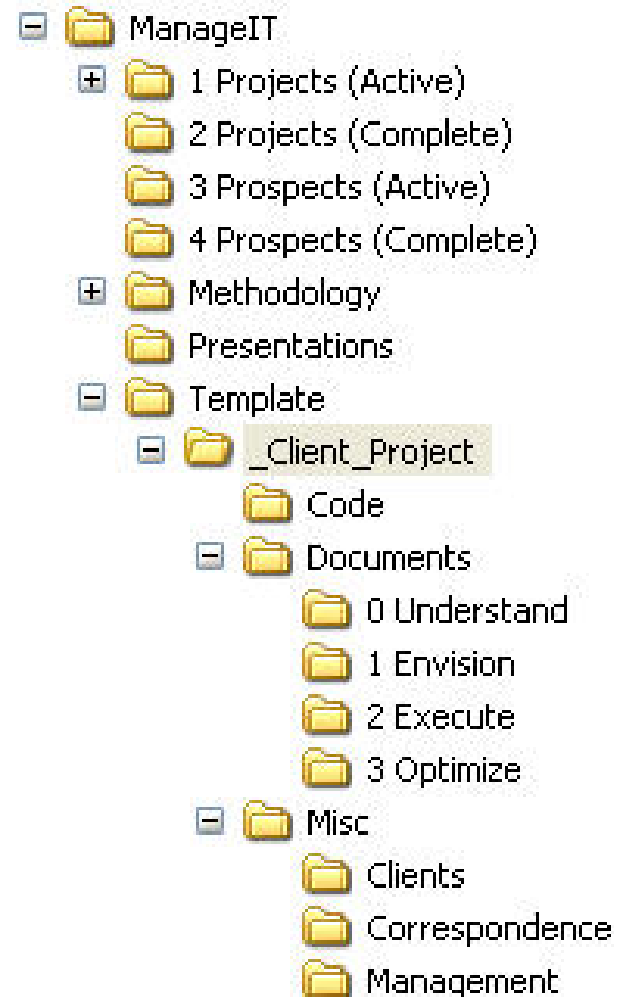
Task Reference:	Mgt-Project/Change Mgt	Resource Reference:
ATP-Approval to Proceed	MPP-MS Project Plan	AM-Account Manager
CHK-Checkpoint	Mgt-Decision Interface	BA-Business Analyst
Client-Client Meeting	Meeting	BD-Business Developer
CRM-Customer Rel. Mgt.	Res-Research	DBA-Database Admin.
Dev-Development Task	PPT-Power Point Pres.	DM-Delivery Manager
DOC-Documentation	QA-Quick Arrow	FA-Financial Admin.
		PM-Project Manager
		QA-Quality Analyst
		RM-Regional Manager
		SA-Systems Analyst
		SE-Software Engineer
		TA-Technical Architect





# ManageIT Repository

- Common Repository
  - Documents & Source Code
- Version Control via VSS
  - Secure / Industry Standard
- Project File Access
  - Visual SourceSafe Explorer
  - Read-Only File Access
- Remote Access
  - VPN (client allows access)
  - Source*OffSite* (TCP/IP)
- Licenses
  - Visual SourceSafe
  - Source*OffSite*





# ManageIT Training Plan

- Training Objectives
  - Methodology Overview
  - Stages Specific Phases / Deliverables
  - Project Management
  - Roles
  - Repository (VSS)
- Training Schedule
  - Methodology Development / Review 4/04/xx – 4/20/xx
  - Manager Training 4/16/xx – 4/27/xx
  - Developer Training 4/23/xx – 5/04/xx
  - New Hire Training Start Date
- Revisions / Enhancements
  - Periodic Review Monthly (May)



# Questions?